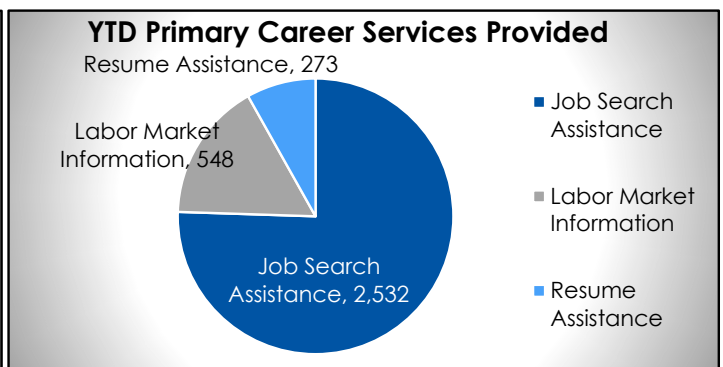
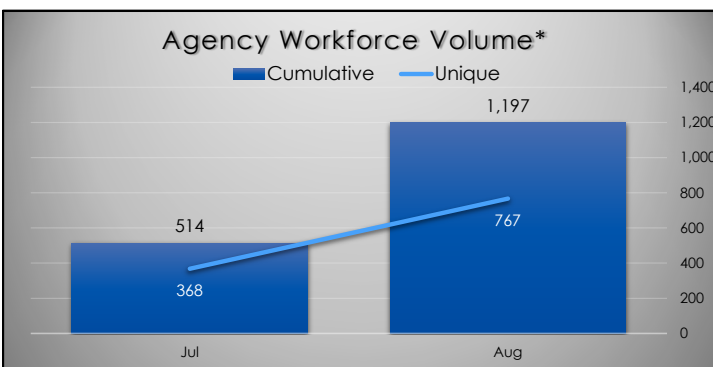
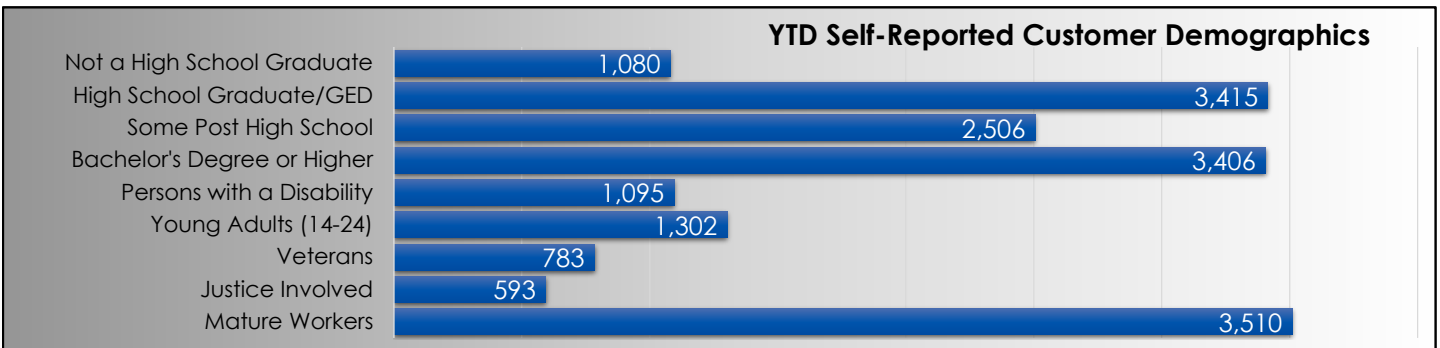
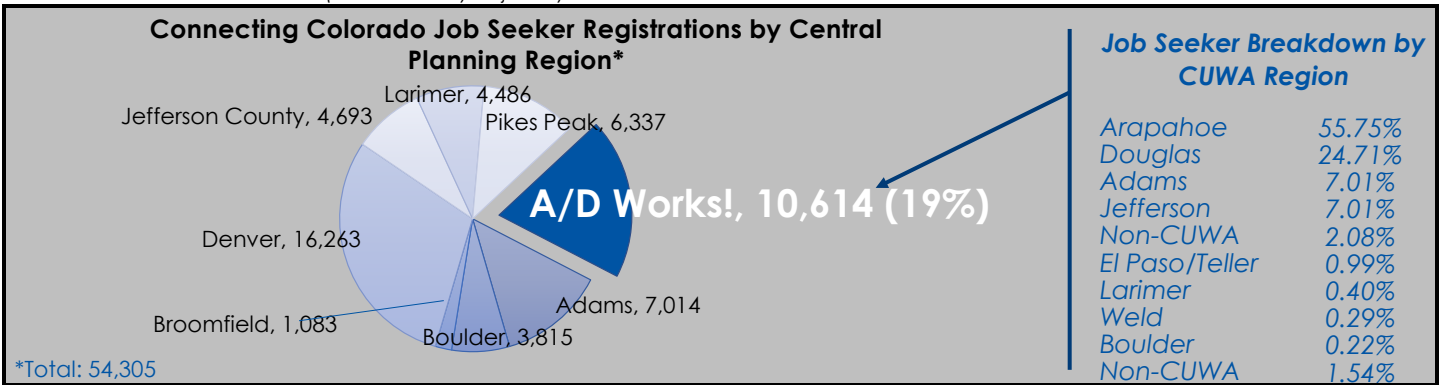


### Labor Force and Unemployment Statistics (August 2023)

	Labor Force	Employment	Unemployment
Arapahoe County	380,943	367,528	13,415
Douglas County	211,803	204,797	7,006
Arapahoe/Douglas Combined	592,746	572,325	20,421
Central Planning Region	2,531,717	2,442,312	89,405
Colorado	3,273,533	3,158,008	115,525
National	168,049,000	161,427,000	6,623,000

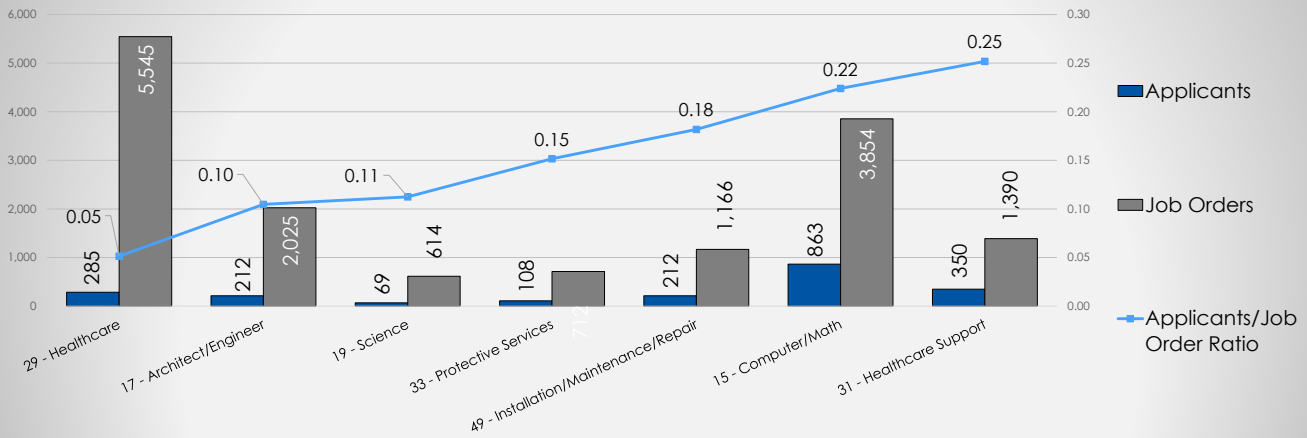
Source: Bureau of Labor Statistics (Not Seasonally Adjusted)



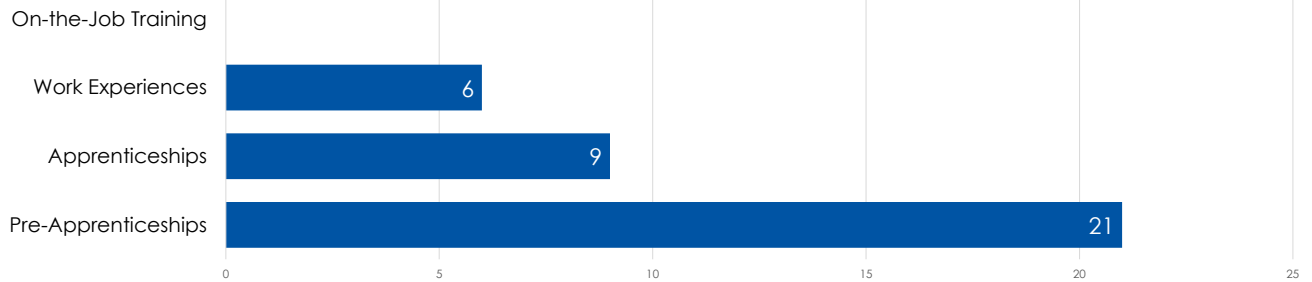
\*Inclusive of all locations (Altura, Centennial, CentrePoint, and Littleton).

## Job Orders (Business & Economic Development Services)

### Supply and Demand (Applicant/Job Order Ratio)



## Work-Based Learning Activities



## Performance Measures

Measure	Local Area Performance	Local Area Standard	Analysis
Adult: Employment Rate 2nd Quarter After Exit	38.60%	75.08%	51.41%
Adult: Median Earning 2nd Quarter After Exit	\$8,092.00	\$7,600.00	106.47%
Dislocated Worker: Employment Rate 2nd Quarter After Exit	32.16%	74.50%	43.16%
Dislocated Worker: Median Earning 2nd Quarter After Exit	\$12,419.00	\$10,000.00	124.19%
Youth & Young Adult: Employment Rate 2nd Quarter After Exit	34.83%	67.50%	51.60%
Youth & Young Adult: Median Earning 2nd Quarter After Exit	\$7,077.00	\$4,100.00	172.61%
Wagner-Peyser: Employment Rate 2nd Quarter After Exit	25.61%	55.00%	46.56%
Wagner-Peyser: Median Earning 2nd Quarter After Exit	\$9,382.00	\$6,200.00	151.32%
Temporary Assistance for Needy Families (TANF): Caseload	619	256	241.80%
Employment First (Arapahoe County): Caseload**	2,104	920	228.70%
Employment First (Arapahoe County): Placements**	0	230	0.00%
Employment First (Douglas County): Caseload**	364	230	158.26%
Employment First (Douglas County): Placements**	312	46	678.26%
Parents to Work: Caseload	119	40	297.50%
Parents to Work: Placements	18	13	140.63%

\*\*Results for Employment First Programs (Arapahoe and Douglas) are based on Fiscal Year (October 1 to September 30).

## Average Wages by Earnings Quintile

