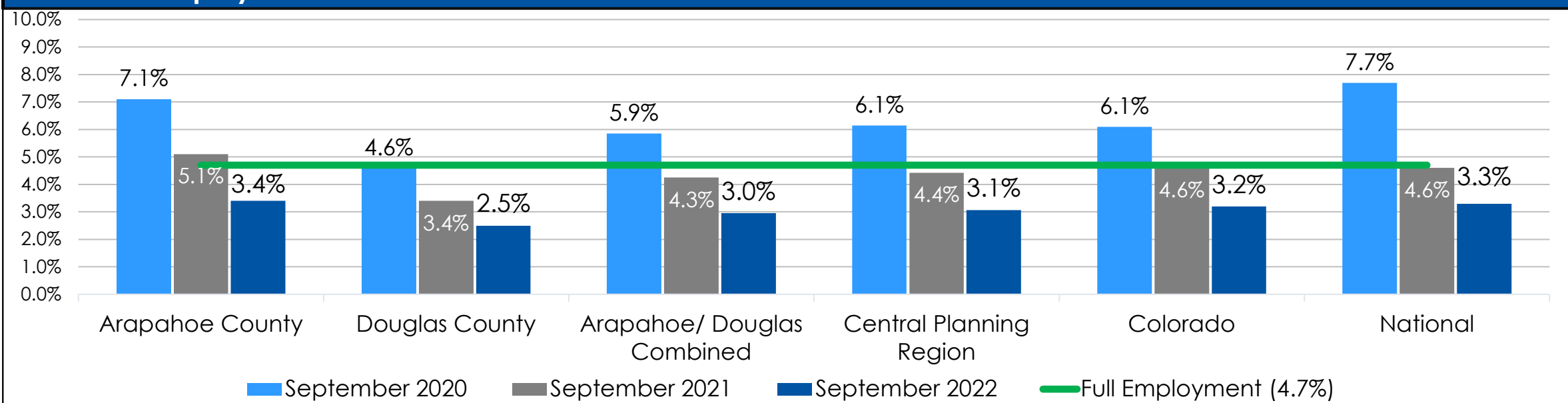


**Annual Unemployment Rates**

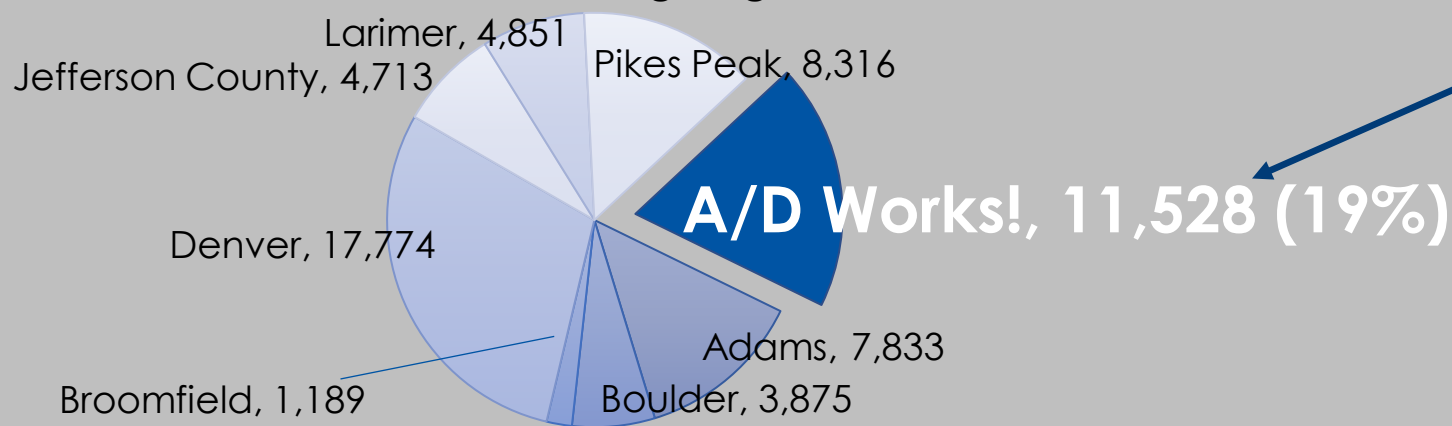


**Labor Force and Unemployment Statistics (September 2022)**

	Labor Force	Employment	Unemployment
Arapahoe County	380,754	367,882	12,872
Douglas County	210,008	204,683	5,325
Arapahoe/Douglas Combined	590,762	572,565	18,197
Central Planning Region	2,517,602	2,437,708	79,894
Colorado	3,263,451	3,159,057	104,394
National	164,463,000	159,003,000	5,460,000

Source: Bureau of Labor Statistics (Not Seasonally Adjusted)

**Connecting Colorado Job Seeker Registrations by Central Planning Region\***



**Job Seeker Breakdown by CUWA Region**

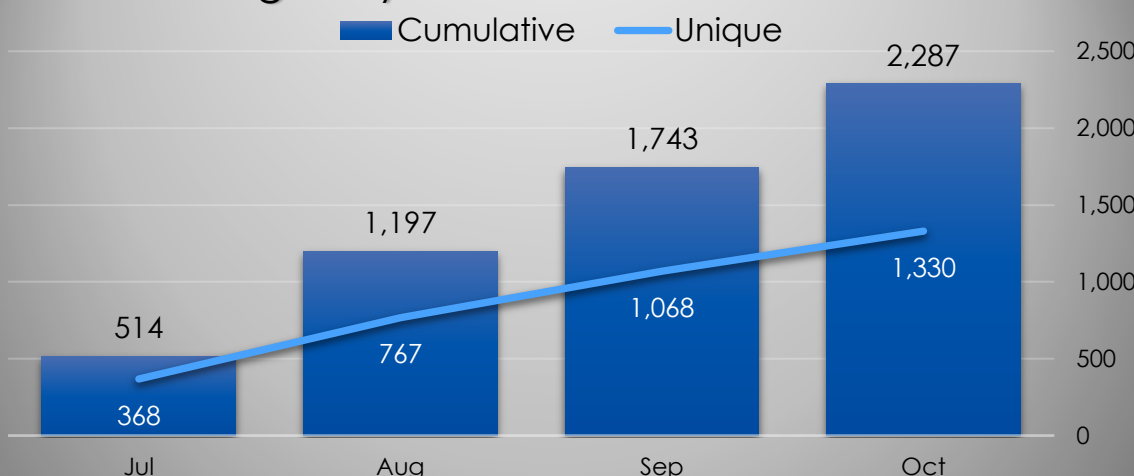
Arapahoe	55.52%
Douglas	22.64%
Denver	8.28%
Adams	7.18%
Jefferson	2.74%
El Paso/Teller	0.78%
Weld	0.47%
Larimer	0.46%
Boulder	0.32%
Non-CUWA	1.61%

\*Total: 60,079

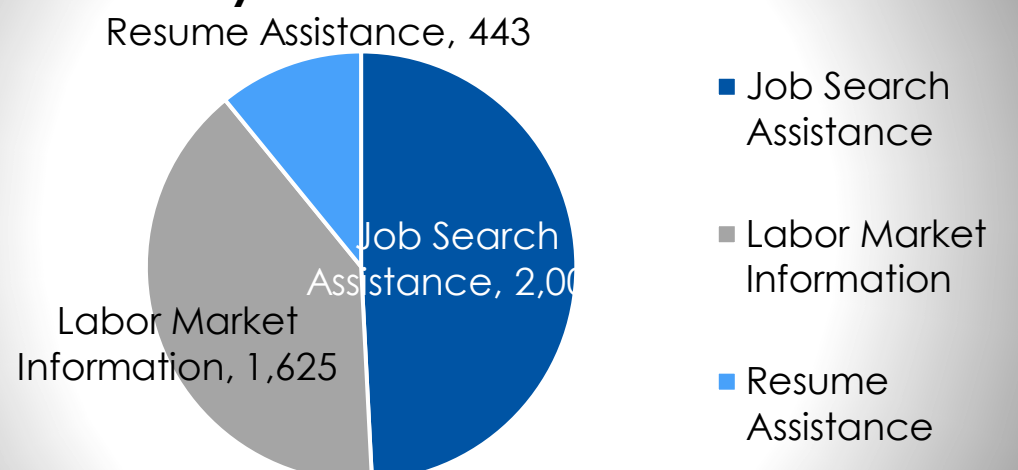
**YTD Self-Reported Customer Demographics**



**Agency Workforce Volume\***



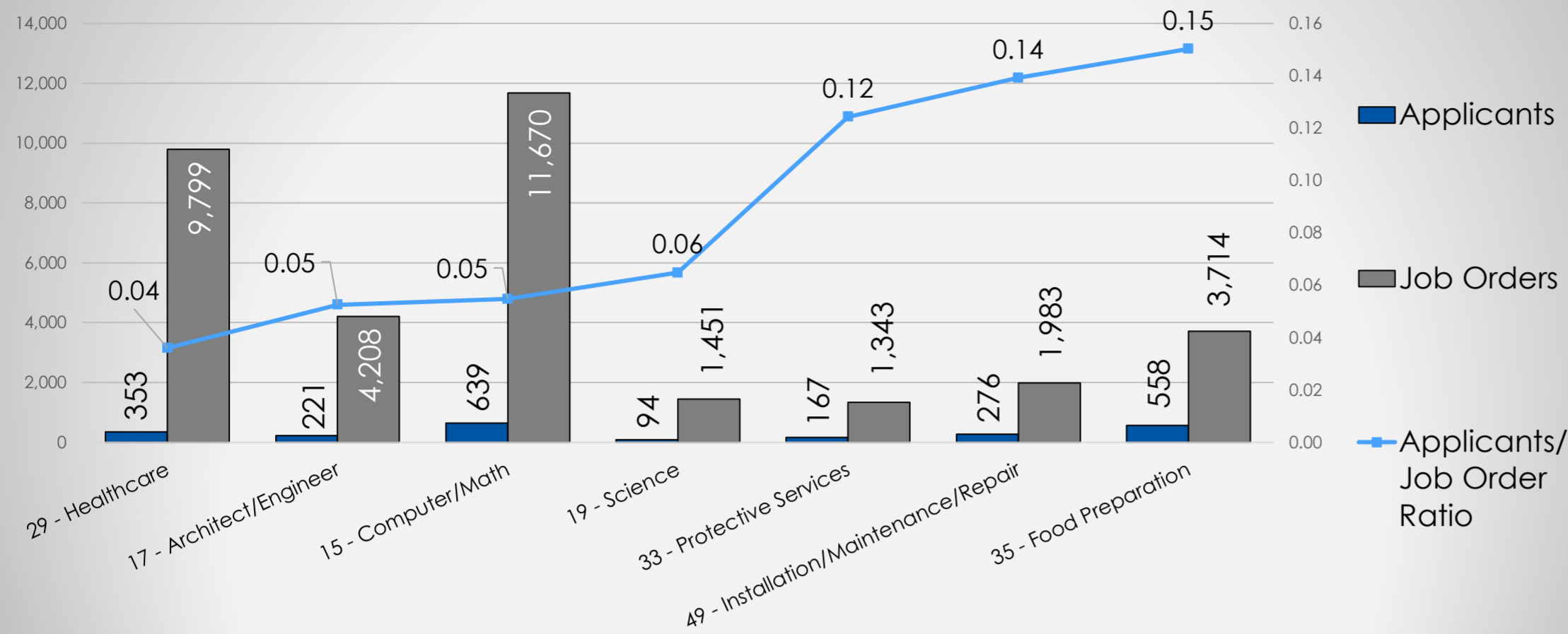
**YTD Primary Career Services Provided**



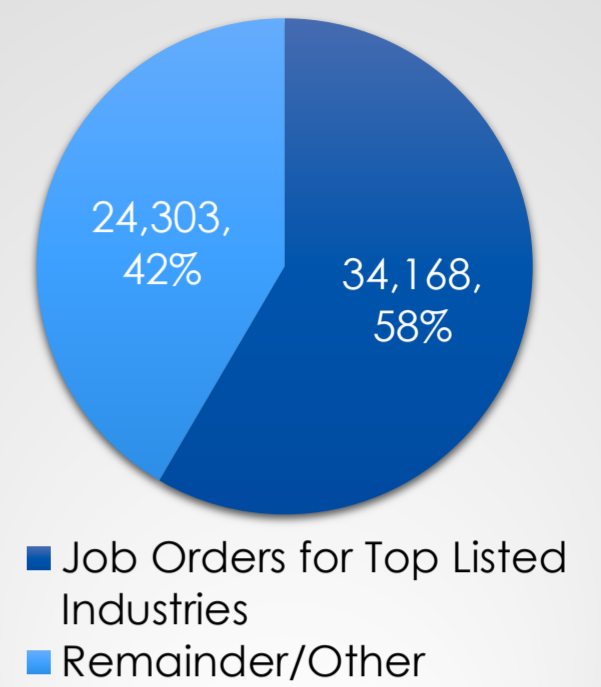
\*Inclusive of all locations (Altura, Centennial, CentrePoint, and Littleton).

## Job Orders (Business & Economic Development Services)

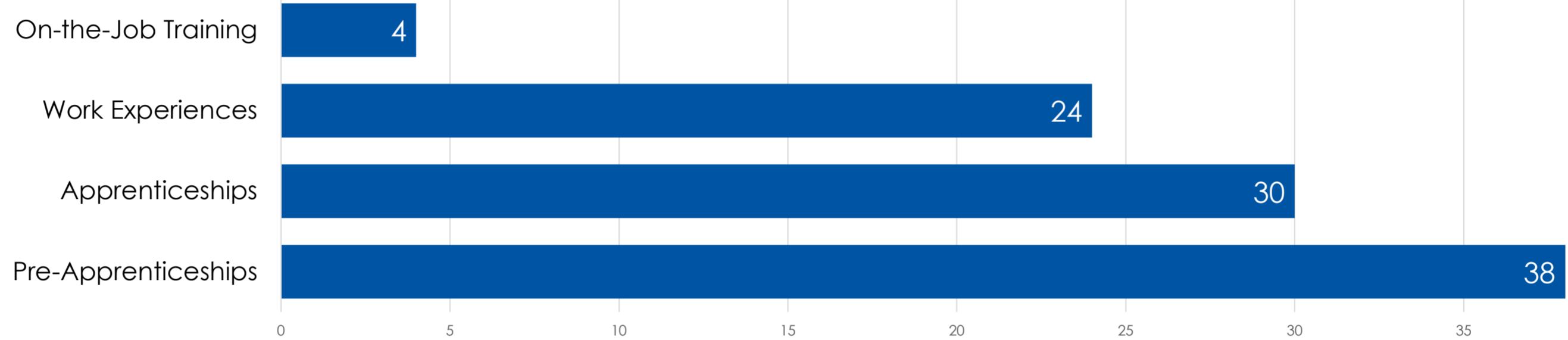
Supply and Demand (Applicant/Job Order Ratio)



Connecting Colorado Job Order Breakdown



## Work-Based Learning Activities



## Performance Measures

Measure	Local Area Performance	Local Area Standard	Analysis
Adult: Employment Rate 2nd Quarter After Exit	61.90%	75.08%	82.45%
Adult: Median Earning 2nd Quarter After Exit	\$7,302.00	\$7,600.00	96.08%
Dislocated Worker: Employment Rate 2nd Quarter After Exit	63.33%	74.50%	85.01%
Dislocated Worker: Median Earning 2nd Quarter After Exit	\$13,234.00	\$10,000.00	132.34%
Youth & Young Adult: Employment Rate 2nd Quarter After Exit	60.00%	67.50%	88.89%
Youth & Young Adult: Median Earning 2nd Quarter After Exit	\$6,965.00	\$4,100.00	169.88%
Wagner-Peyser: Employment Rate 2nd Quarter After Exit	52.65%	55.00%	95.73%
Wagner-Peyser: Median Earning 2nd Quarter After Exit	\$7,661.00	\$6,200.00	123.56%
Temporary Assistance for Needy Families (TANF): Caseload	1,838	528	348.11%
TANF: Entered Employment (Cumulative Goal of 40%)*	17.54%	19.47%	90.09%
Employment First (Arapahoe County): Caseload**	161	80	201.25%
Employment First (Arapahoe County): Placements**	57	20	285.00%
Employment First (Douglas County): Caseload**	34	20	170.00%
Employment First (Douglas County): Placements**	32	4	800.00%
Parents to Work: Caseload	128	83	155.15%
Parents to Work: Placements	48	26	181.82%

\*September 2022 / \*\*Results for Employment First Programs (Arapahoe and Douglas) are based on Fiscal Year (October 1 to September 30).

## Average Wages by Earnings Quintile



5th Quintile (>\$60.99/hr)  
 4th Quintile (\$37.28-\$60.99/hr)  
 3rd Quintile (\$22.65-\$37.28/hr)  
 2nd Quintile (\$11.85 - \$22.65/hr)  
 1st Quintile (<\$11.85/hr)  
 Arapahoe/Douglas Works! Program Average Wage of Placement is \$22.21 (2nd Quintile).