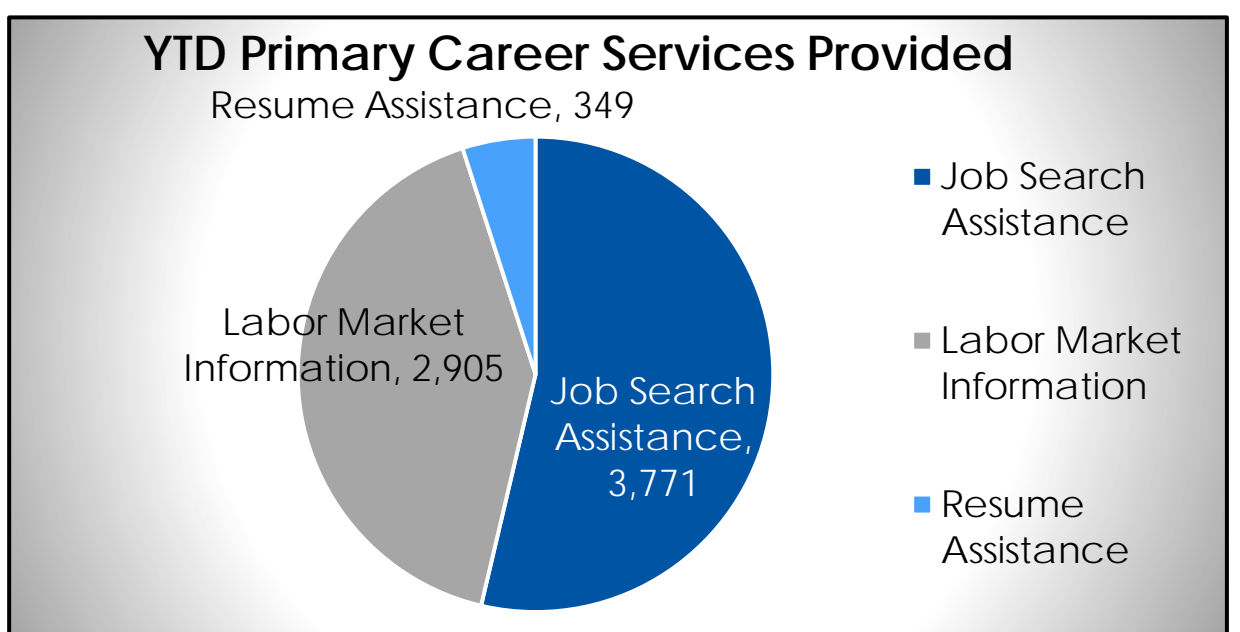
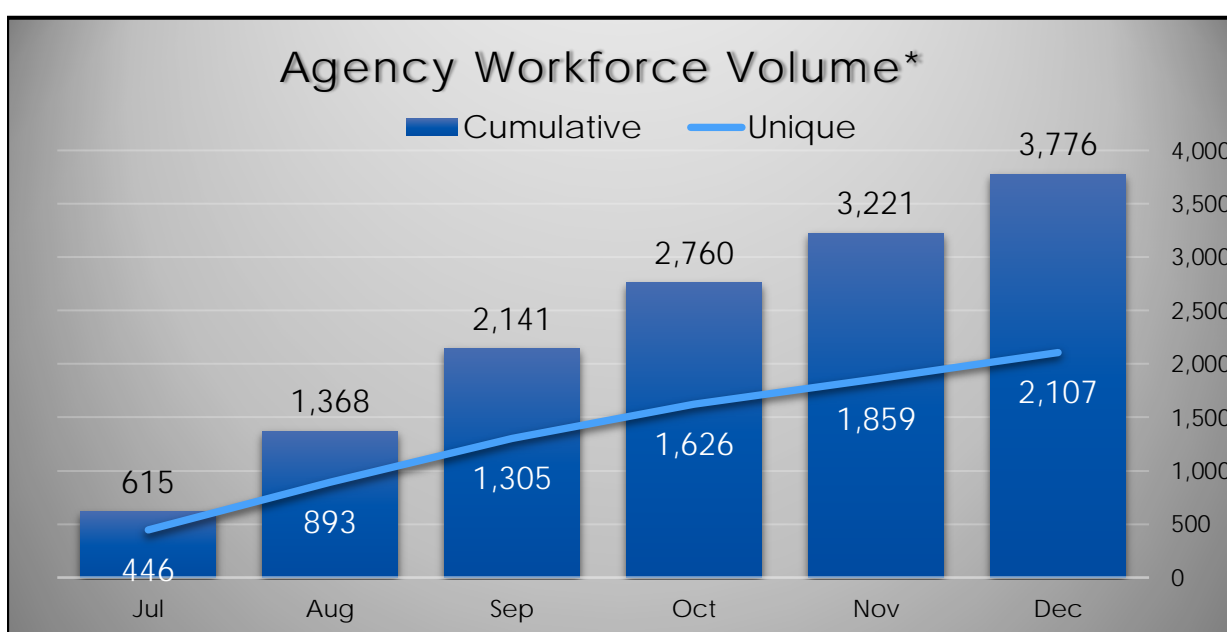
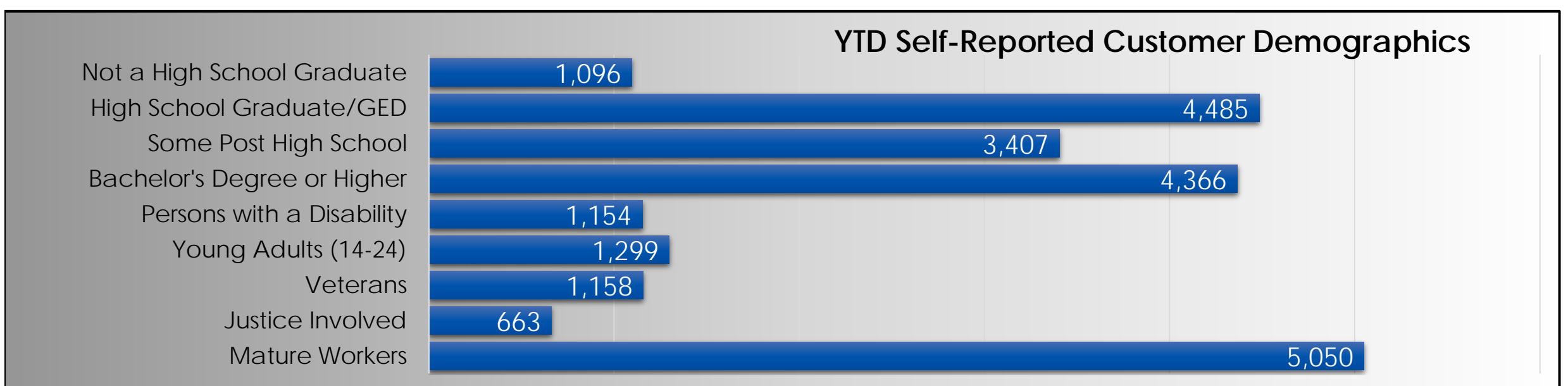
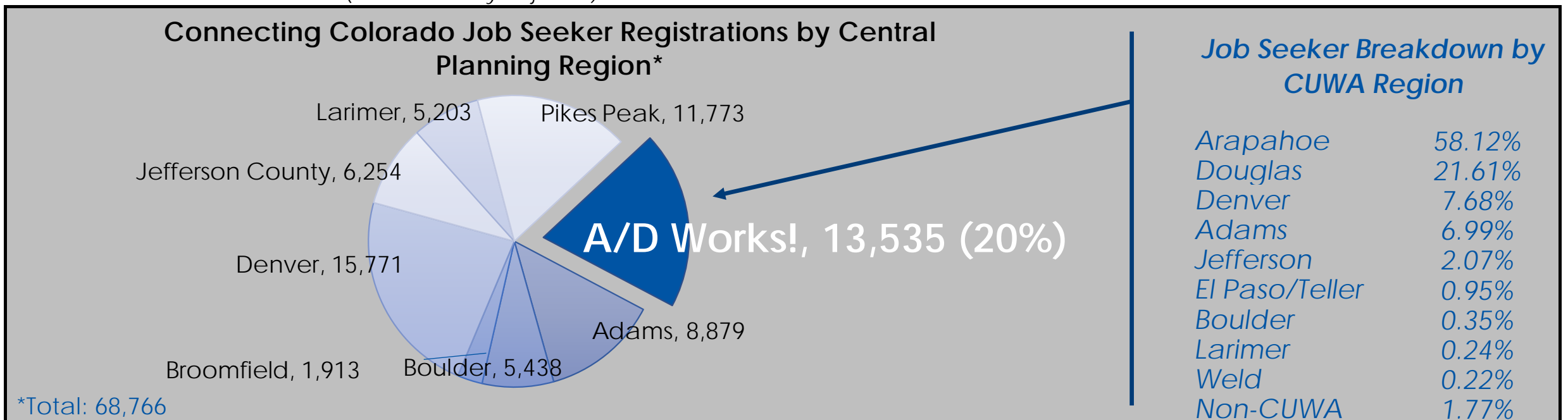


### Labor Force and Unemployment Statistics (for November 2021)

	Labor Force	Employment	Unemployment
Arapahoe County	380,492	362,461	18,031
Douglas County	203,441	196,593	6,848
Arapahoe/Douglas Combined	583,933	559,054	24,879
Central Planning Region	2,486,206	2,377,337	108,869
Colorado	3,217,459	3,074,976	142,483
National	162,099,000	155,797,000	6,302,000

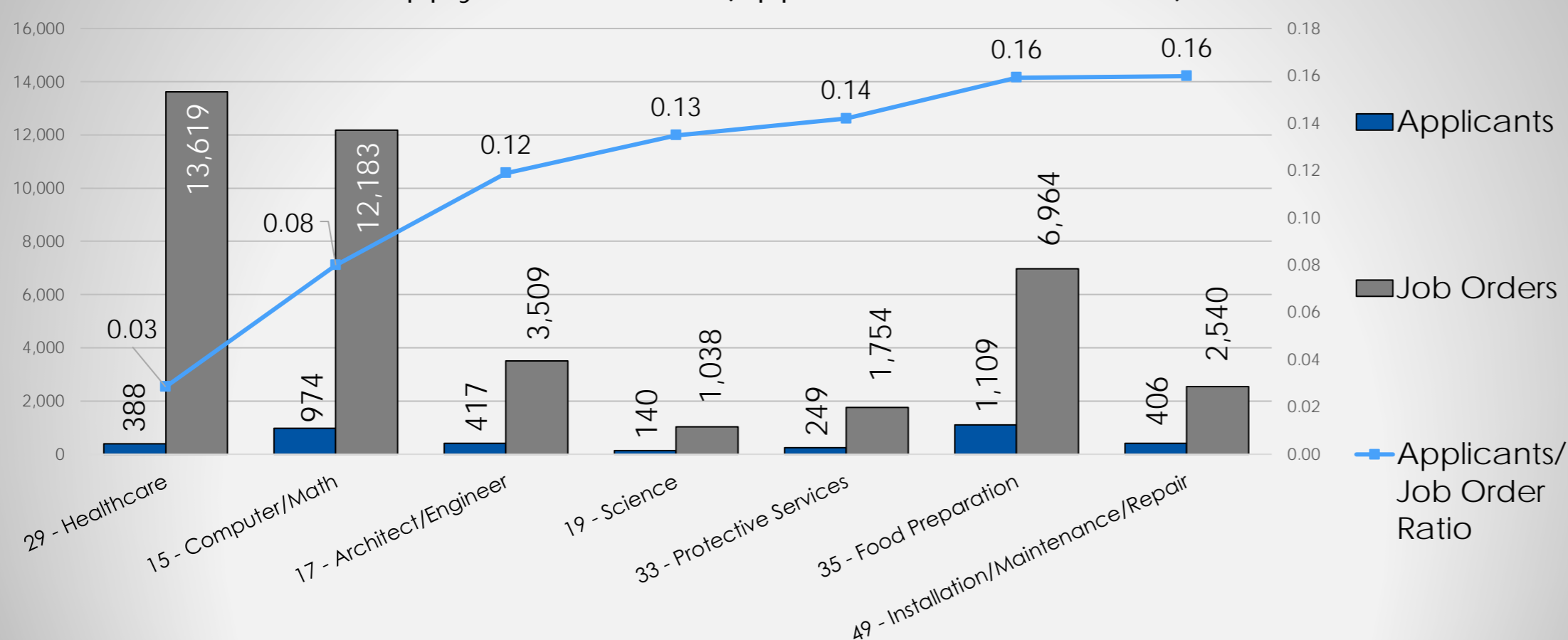
Source: Bureau of Labor Statistics (Not Seasonally Adjusted)



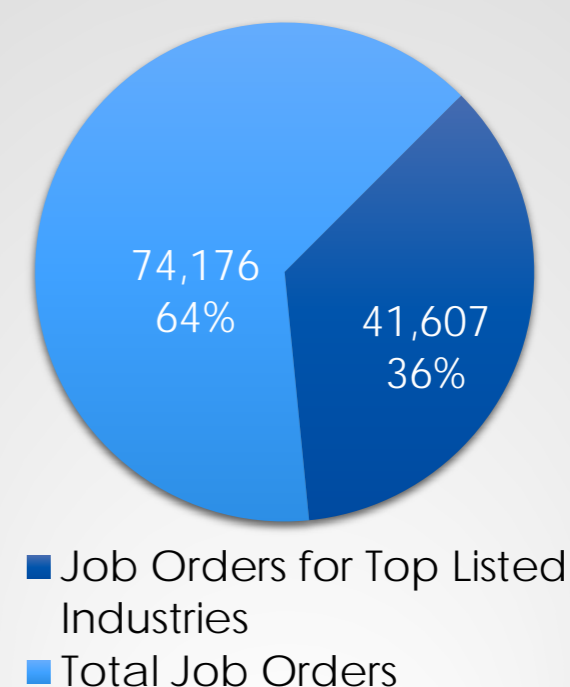
\*Inclusive of all locations (Altura, Centennial, CentrePoint, and Littleton).

## Job Orders (Business & Economic Development Services)

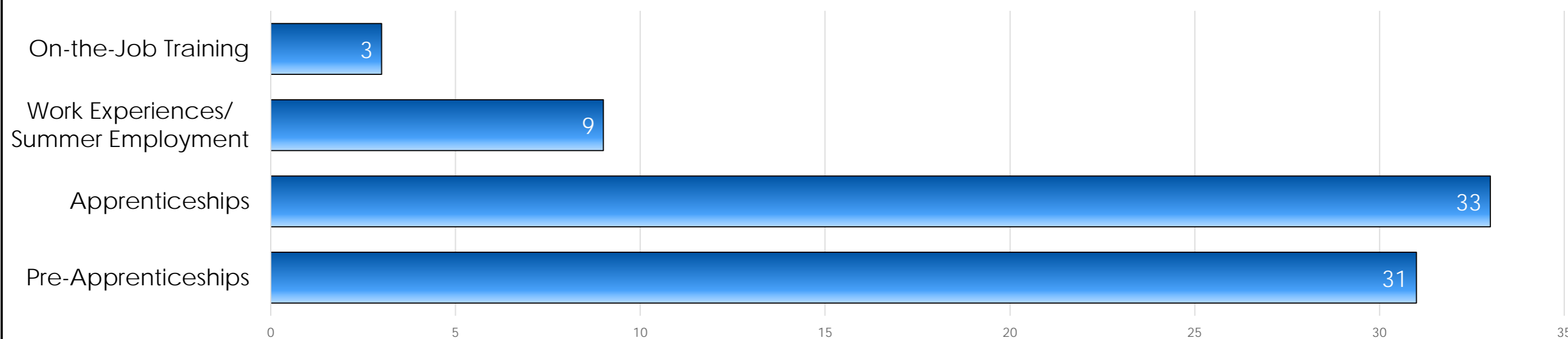
Supply and Demand (Applicant/Job Order Ratio)



Connecting Colorado Job Order Breakdown



## Work-Based Learning Activities



## Performance Measures

Measure	Local Area Performance	Local Area Standard	Analysis
Adult: Employment Rate 2nd Quarter After Exit	28.57%	75.08%	38.05%
Adult: Median Earning 2nd Quarter After Exit	\$7,402.00	\$7,600.00	97.39%
Dislocated Worker: Employment Rate 2nd Quarter After Exit	49.59%	74.50%	66.57%
Dislocated Worker: Median Earning 2nd Quarter After Exit	\$15,606.00	\$10,000.00	156.06%
Youth & Young Adult: Employment Rate 2nd Quarter After Exit	26.17%	67.50%	38.78%
Youth & Young Adult: Median Earning 2nd Quarter After Exit	\$5,972.00	\$4,100.00	145.66%
Wagner-Peyser: Employment Rate 2nd Quarter After Exit	65.39%	57.00%	114.72%
Wagner-Peyser: Median Earning 2nd Quarter After Exit	\$6,791.00	\$5,600.00	121.27%
November - Temporary Assistance for Needy Families (TANF): Caseload	968	504	192.06%
TANF: Entered Employment (Cumulative Goal of 40%)*	23.62%	21.65%	109.10%
November - Employment First (Arapahoe County): Caseload**	412	160	257.50%
November - Employment First (Arapahoe County): Placements**	70	40	175.00%
November - Employment First (Douglas County): Caseload**	38	40	95.00%
November - Employment First (Douglas County): Placements**	20	8	250.00%
Parents to Work: Caseload	143	125	114.40%
Parents to Work: Placements	31	40	77.50%

\*October 2021 / \*\*Results for Employment First Programs (Arapahoe and Douglas) are based on Fiscal Year (October 1 to September 30).

## Average Wages by Earnings Quintile

