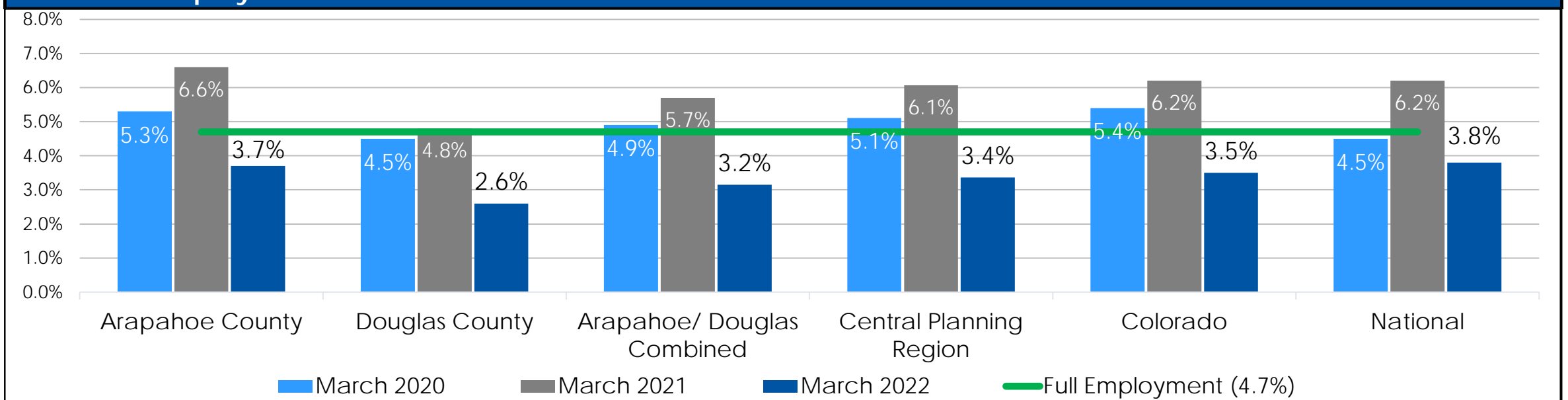


Annual Unemployment Rates

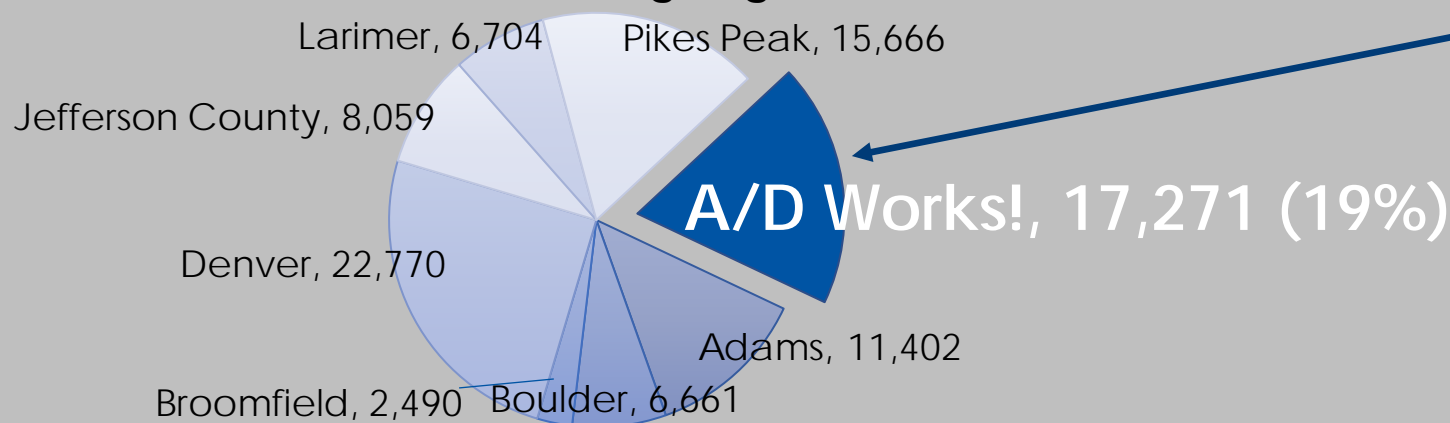


Labor Force and Unemployment Statistics (for March 2022)

	Labor Force	Employment	Unemployment
Arapahoe County	374,382	360,351	14,031
Douglas County	206,012	200,647	5,365
Arapahoe/Douglas Combined	580,394	560,998	19,396
Central Planning Region	2,472,029	2,385,841	86,188
Colorado	3,224,391	3,110,651	113,740
National	164,274,000	158,106,000	6,168,000

Source: Bureau of Labor Statistics (Not Seasonally Adjusted)

Connecting Colorado Job Seeker Registrations by Central Planning Region*



Job Seeker Breakdown by CUWA Region

Arapahoe	57.14%
Douglas	22.22%
Denver	7.70%
Adams	7.01%
Jefferson	2.34%
El Paso/Teller	1.00%
Boulder	0.36%
Larimer	0.34%
Weld	0.21%
Non-CUWA	1.68%

*Total: 91,023

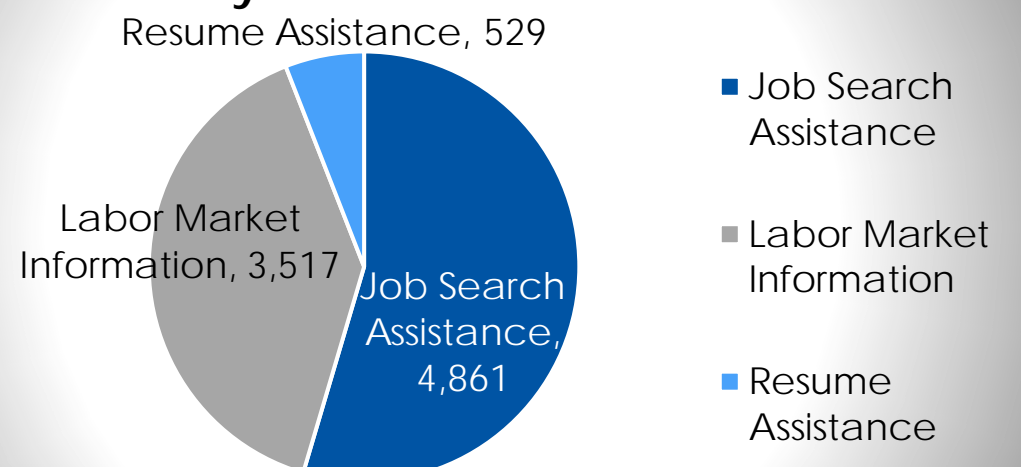
YTD Self-Reported Customer Demographics



Agency Workforce Volume*



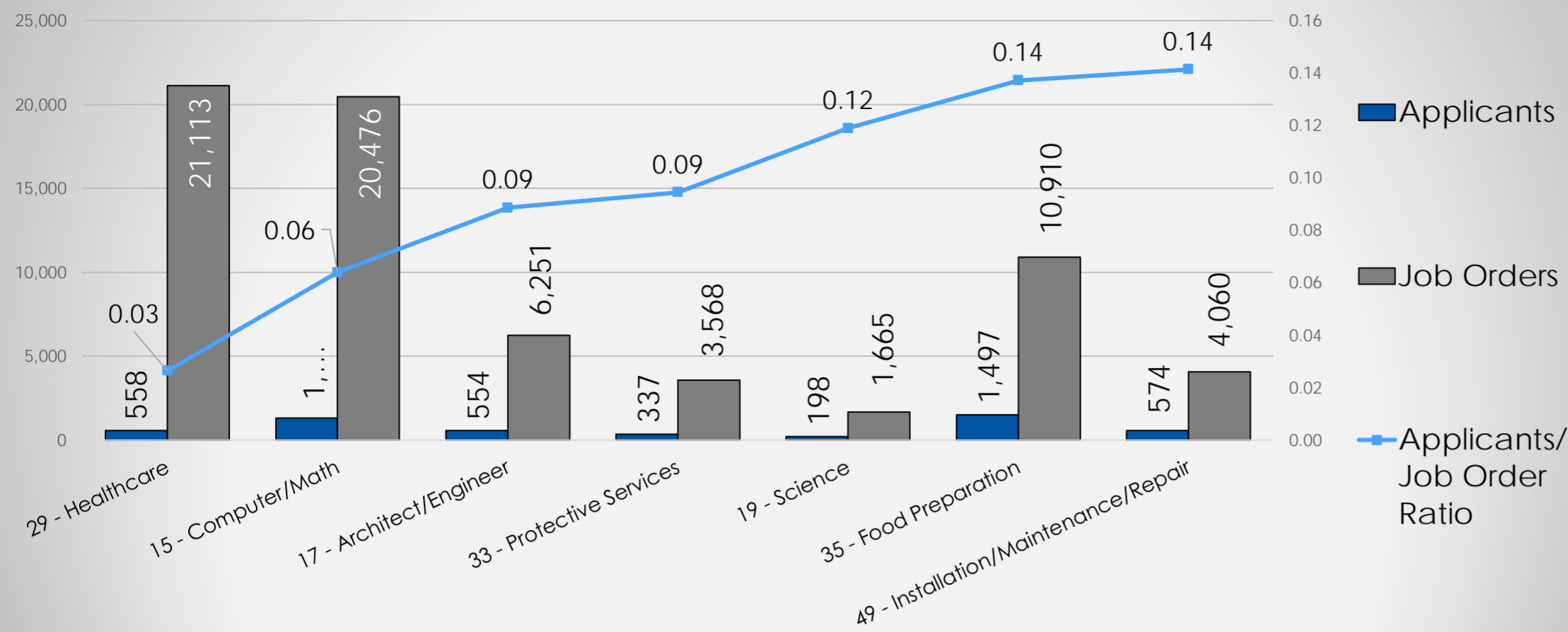
YTD Primary Career Services Provided



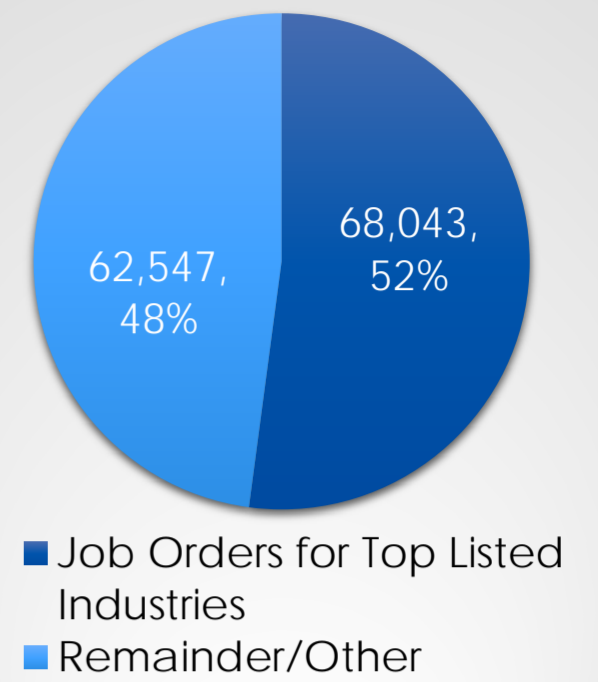
*Inclusive of all locations (Altura, Centennial, CentrePoint, and Littleton).

Job Orders (Business & Economic Development Services)

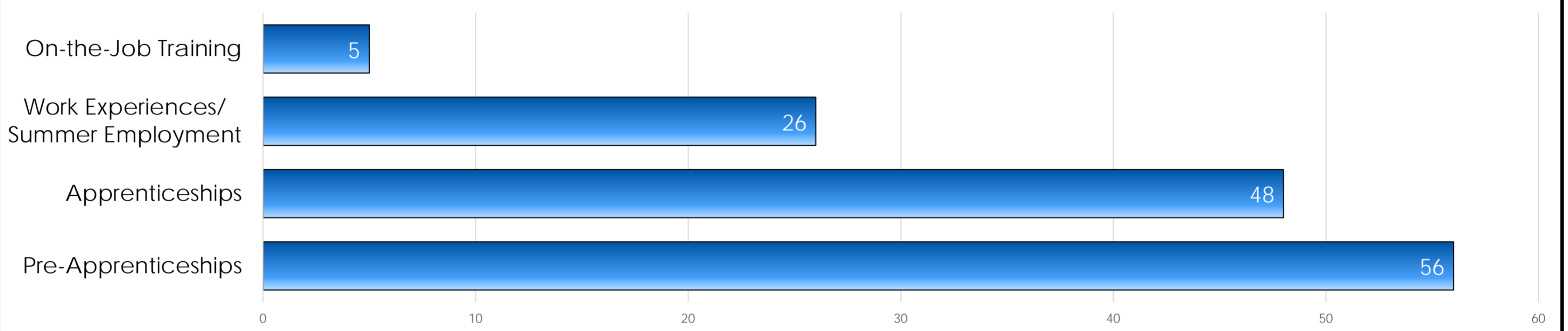
Supply and Demand (Applicant/Job Order Ratio)



Connecting Colorado Job Order Breakdown



Work-Based Learning Activities



Performance Measures

Measure	Local Area Performance	Local Area Standard	Analysis
Adult: Employment Rate 2nd Quarter After Exit	59.69%	75.08%	79.50%
Adult: Median Earning 2nd Quarter After Exit	\$8,573.00	\$7,600.00	112.80%
Dislocated Worker: Employment Rate 2nd Quarter After Exit	73.17%	74.50%	98.22%
Dislocated Worker: Median Earning 2nd Quarter After Exit	\$14,522.00	\$10,000.00	145.22%
Youth & Young Adult: Employment Rate 2nd Quarter After Exit	59.69%	67.50%	88.43%
Youth & Young Adult: Median Earning 2nd Quarter After Exit	\$8,573.00	\$4,100.00	209.10%
Wagner-Peyser: Employment Rate 2nd Quarter After Exit	65.39%	57.00%	114.72%
Wagner-Peyser: Median Earning 2nd Quarter After Exit	\$6,791.00	\$5,600.00	121.27%
Temporary Assistance for Needy Families (TANF): Caseload	1,391	996	139.66%
TANF: Entered Employment (Cumulative Goal of 40%)*	34.77%	30.68%	113.33%
Employment First (Arapahoe County): Caseload**	1,259	500	251.80%
February - Employment First (Arapahoe County): Placements**	197	105	187.62%
Employment First (Douglas County): Caseload**	138	125	110.40%
February - Employment First (Douglas County): Placements**	46	21	219.05%
Parents to Work: Caseload	193	208	93.01%
Parents to Work: Placements	62	66	93.37%

*March 2022 / **Results for Employment First Programs (Arapahoe and Douglas) are based on Fiscal Year (October 1 to September 30).

Average Wages by Earnings Quintile

