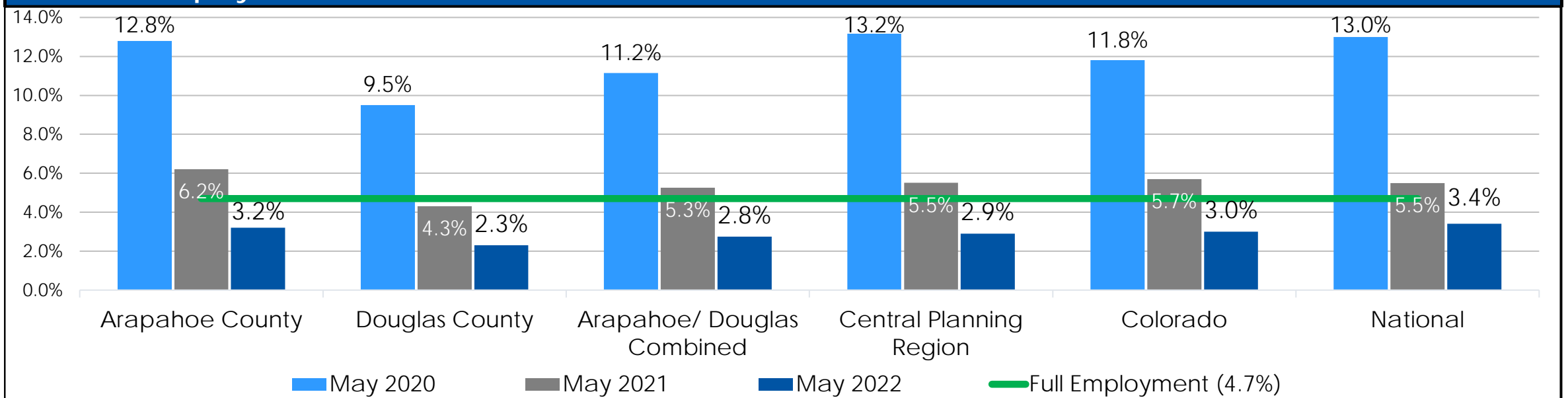


Annual Unemployment Rates

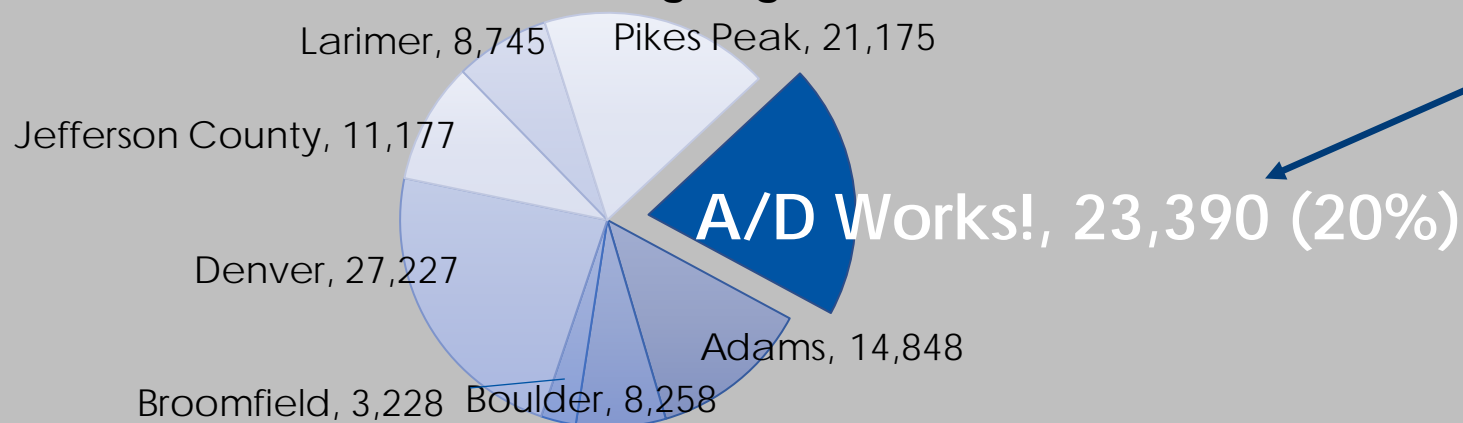


Labor Force and Unemployment Statistics (for May 2022)

	Labor Force	Employment	Unemployment
Arapahoe County	374,986	362,835	12,151
Douglas County	206,785	202,028	4,757
Arapahoe/Douglas Combined	581,771	564,863	16,908
Central Planning Region	2,478,761	2,404,612	74,149
Colorado	3,221,916	3,123,942	97,974
National	164,157,000	158,609,000	5,548,000

Source: Bureau of Labor Statistics (Not Seasonally Adjusted)

Connecting Colorado Job Seeker Registrations by Central Planning Region*



Job Seeker Breakdown by CUWA Region

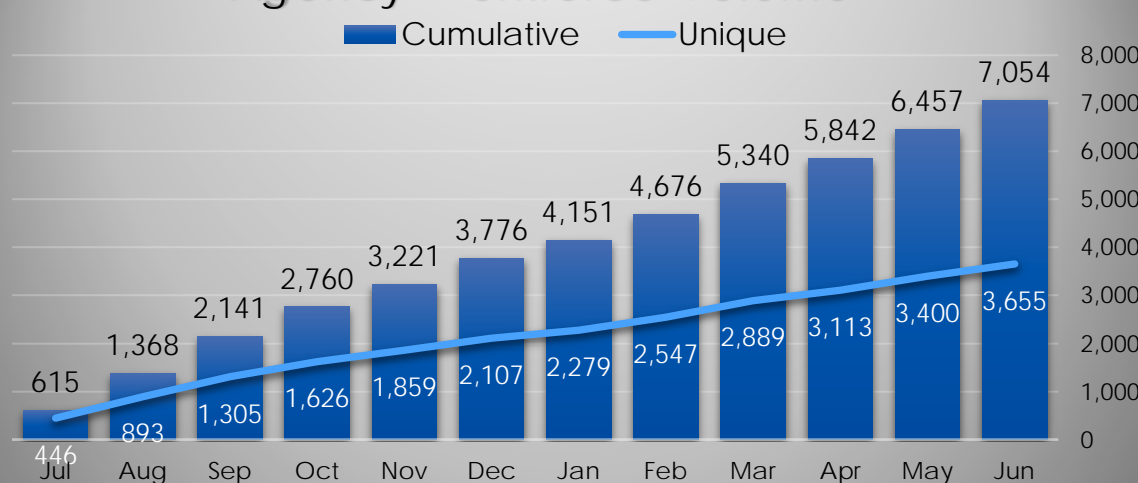
Arapahoe	56.60%
Douglas	22.27%
Denver	7.67%
Adams	7.21%
Jefferson	2.39%
El Paso/Teller	1.09%
Boulder	0.41%
Larimer	0.38%
Weld	0.24%
Non-CUWA	1.74%

*Total: 118,048

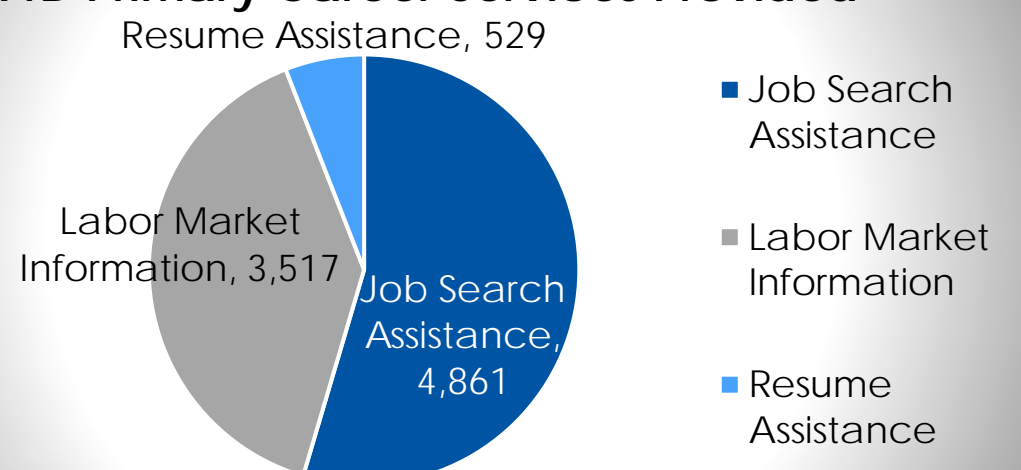
YTD Self-Reported Customer Demographics



Agency Workforce Volume*



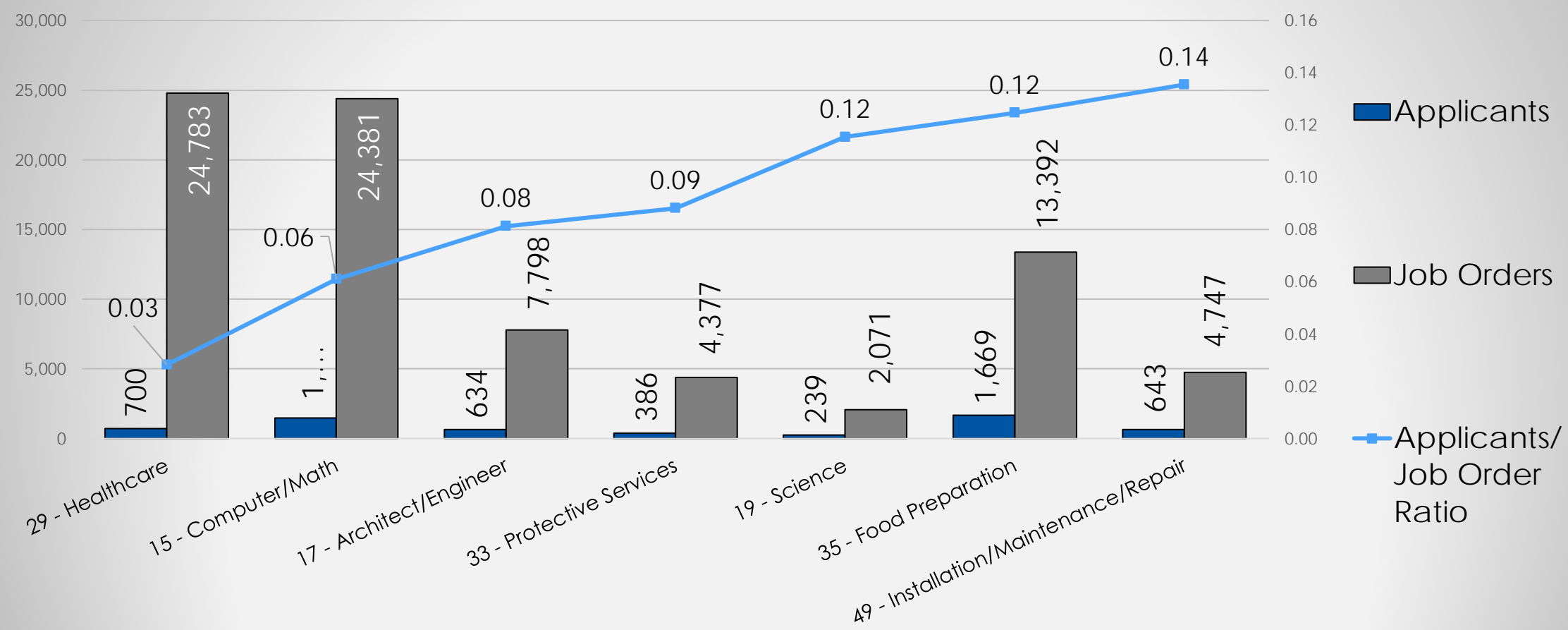
YTD Primary Career Services Provided



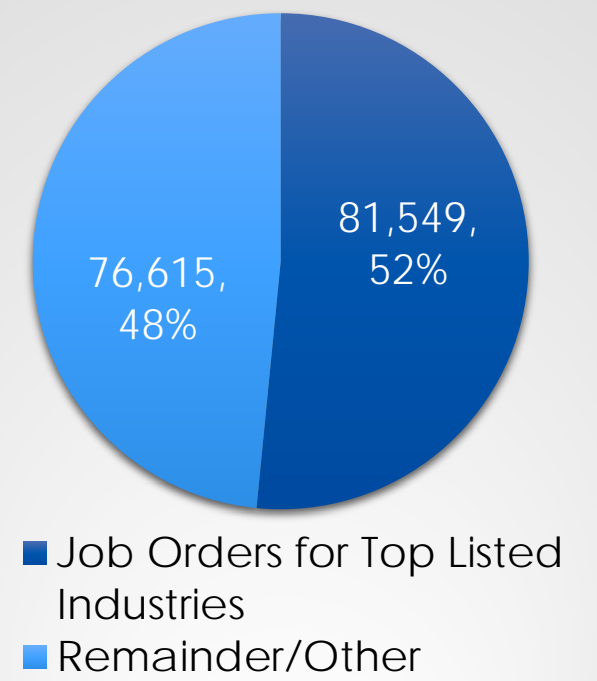
*Inclusive of all locations (Altura, Centennial, CentrePoint, and Littleton).

Job Orders (Business & Economic Development Services)

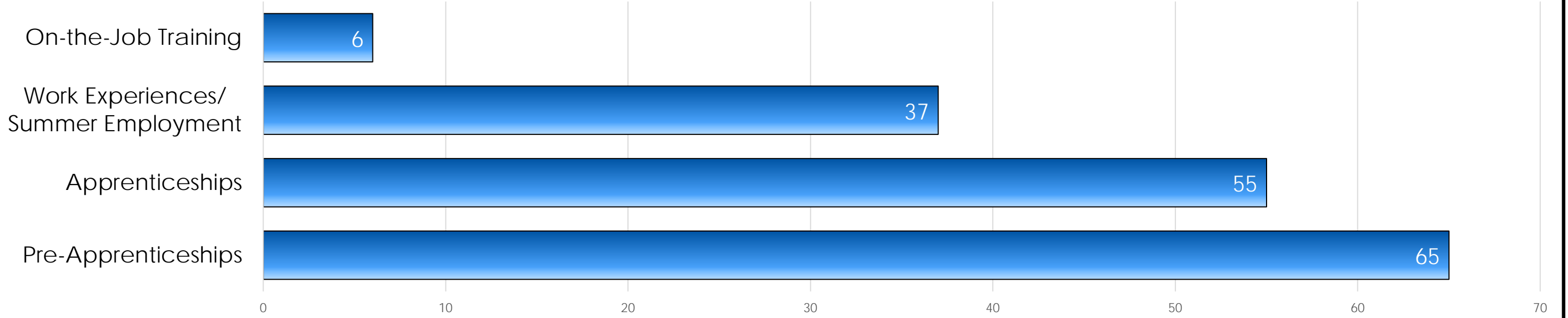
Supply and Demand (Applicant/Job Order Ratio)



Connecting Colorado Job Order Breakdown



Work-Based Learning Activities

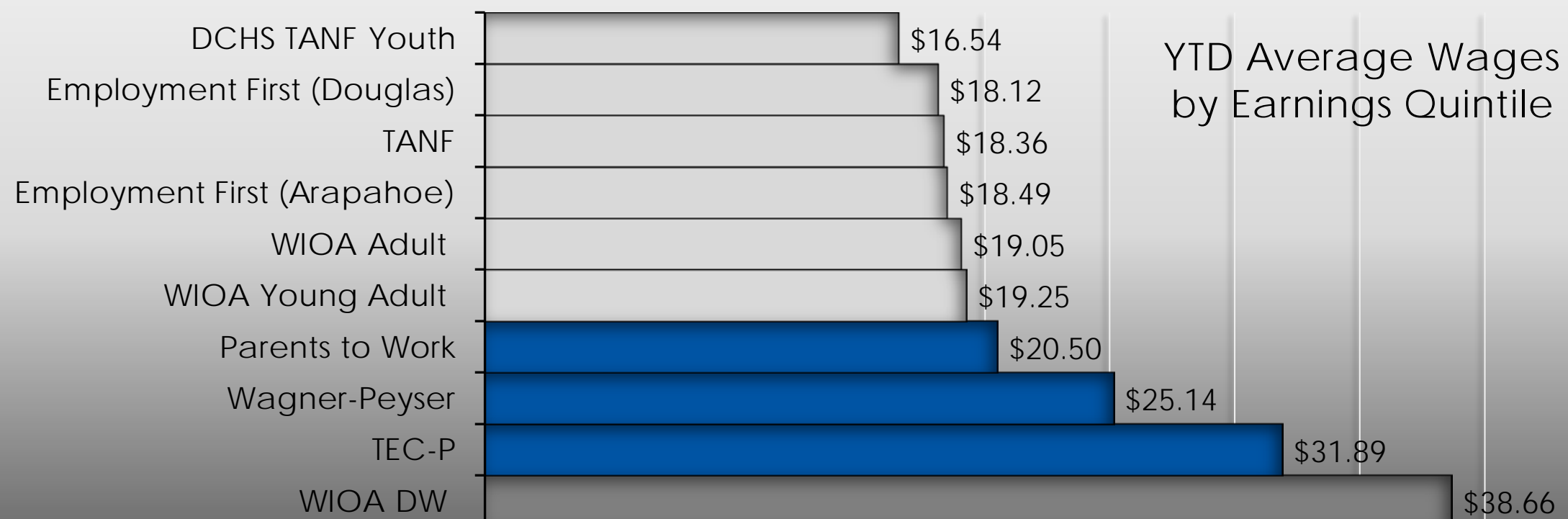


Performance Measures

Measure	Local Area Performance	Local Area Standard	Analysis
Adult: Employment Rate 2nd Quarter After Exit	68.22%	75.08%	90.86%
Adult: Median Earning 2nd Quarter After Exit	\$8,341.00	\$7,600.00	109.75%
Dislocated Worker: Employment Rate 2nd Quarter After Exit	74.80%	74.50%	100.40%
Dislocated Worker: Median Earning 2nd Quarter After Exit	\$14,194.00	\$10,000.00	141.94%
Youth & Young Adult: Employment Rate 2nd Quarter After Exit	73.83%	67.50%	109.37%
Youth & Young Adult: Median Earning 2nd Quarter After Exit	\$4,655.00	\$4,100.00	113.54%
Wagner-Peyser: Employment Rate 2nd Quarter After Exit	65.39%	57.00%	114.72%
Wagner-Peyser: Median Earning 2nd Quarter After Exit	\$6,791.00	\$5,600.00	121.27%
Temporary Assistance for Needy Families (TANF): Caseload	1,564	1,600	97.75%
TANF: Entered Employment (Cumulative Goal of 40%)*	40.05%	33.55%	119.37%
Employment First (Arapahoe County): Caseload**	1,746	750	232.80%
Employment First (Arapahoe County): Placements**	412	188	219.73%
Employment First (Douglas County): Caseload**	203	188	108.27%
Employment First (Douglas County): Placements**	114	38	304.00%
Parents to Work: Caseload	218	250	87.20%
Parents to Work: Placements	75	80	93.75%

*May 2022 / **Results for Employment First Programs (Arapahoe and Douglas) are based on Fiscal Year (October 1 to September 30).

Average Wages by Earnings Quintile



5th Quintile (>\$60.99/hr)
 4th Quintile (\$37.28-\$60.99/hr)
 3rd Quintile (\$22.65-\$37.28/hr)
 2nd Quintile (\$11.85 - \$22.65/hr)
 1st Quintile (<\$11.85/hr)
 Arapahoe/Douglas Works! Program Average Wage of Placement is \$22.60 (2nd Quintile).