

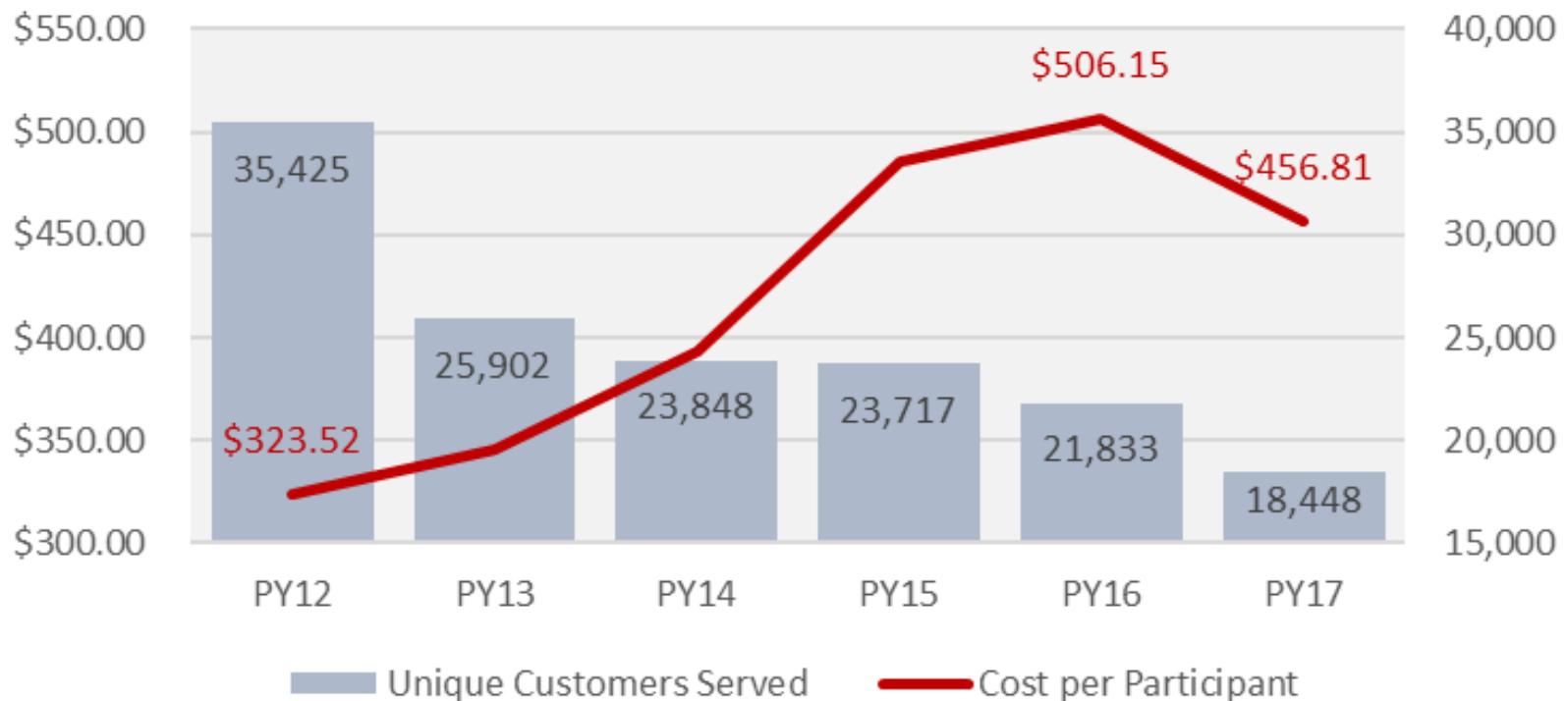


10th Annual Economic Impact Report

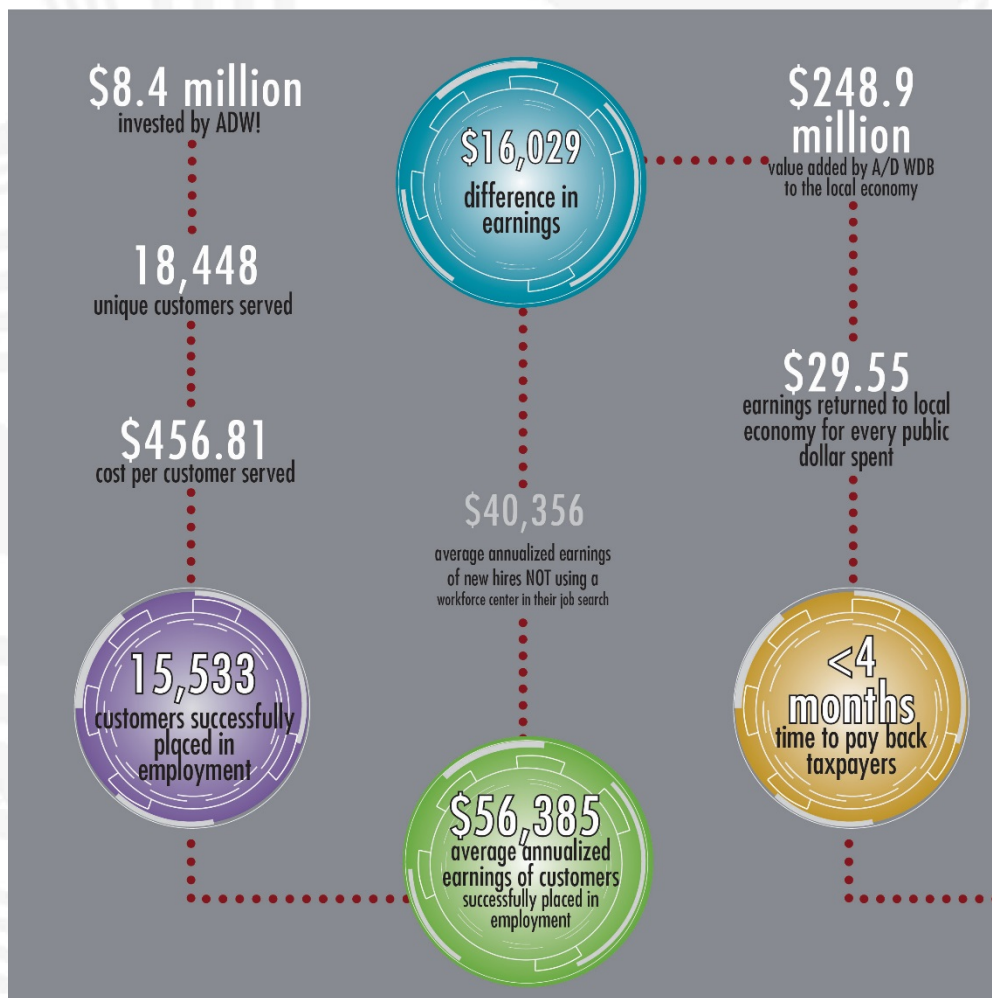
December 6, 2018

More Barriers, Improved Processes, Lower Cost Per

Cost Per Customer and Number of Unique Customers

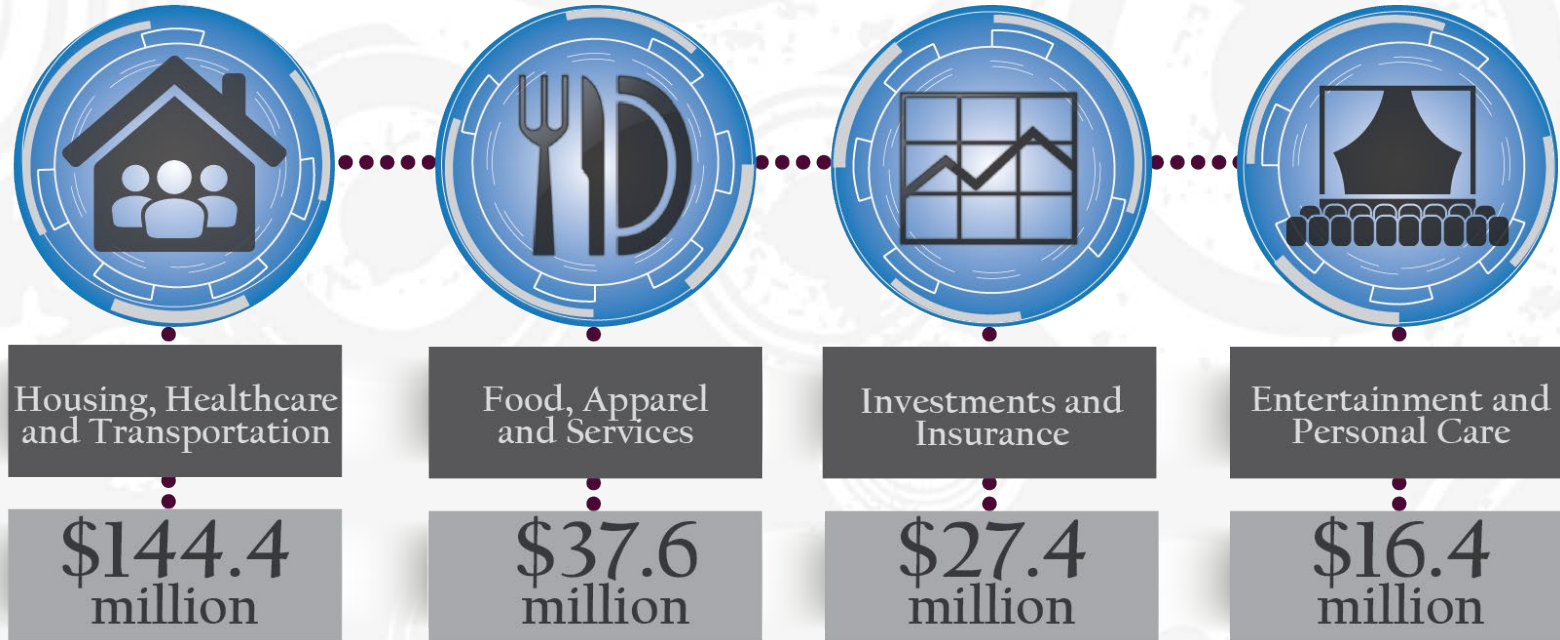


Our Story



The most valid and reliable way to measure the economic impact of workforce investment boards and their operators is to measure the difference in earnings between those who used the workforce development system in their job search and those who did not. Our model uses employment data reported by Social Security Number to the Colorado Department of Labor and Employment and US Census Bureau to determine this difference in earnings.

Consumer Spending: \$248.9 Million



For every public dollar invested by the Arapahoe/Douglas Workforce Development Board, the return was \$29.55 in increased consumer spending.

Wage Outcomes

Wage Outcomes by Quintile, Special Populations

